

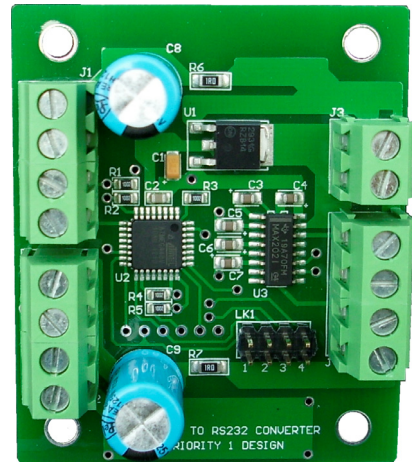
WIE232-A

Dual Wiegand to RS232 Converter.

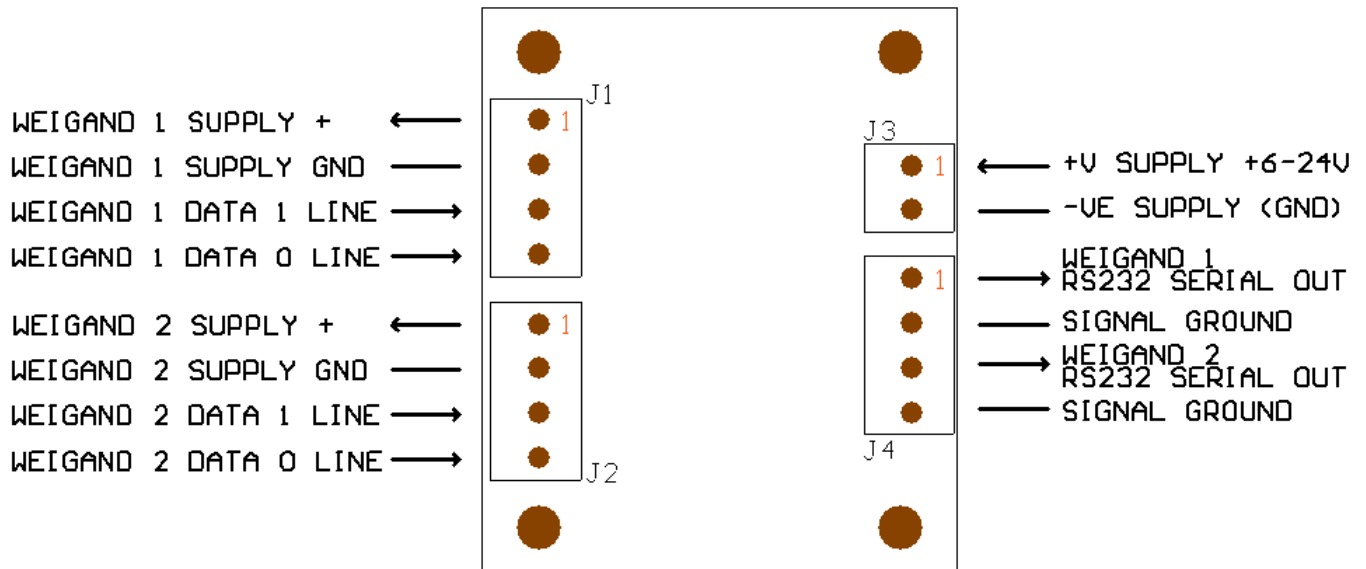
Designed for embedding into products manufactured by third-parties, this Wiegand to RS232 converter is designed with 2 ports for taking up to 2 Wiegand sources using Wiegand 26, or Wiegand 37 bit format and converting it to a RS232 data stream at 9600 Baud.

- Input connectors for 2 separate wiegand streams.
- Two RS232 output ports.
- DC operation from 6.0V - 24.0V dc.
- Wiegand 26 bit format
- Wiegand 37 bit format (*1)
- Outputs hexadecimal ASCII characters at 9600 Baud.
- Small unit size of 53 x 63mm
- 4 mounting holes

(*1) Other formats available on request.

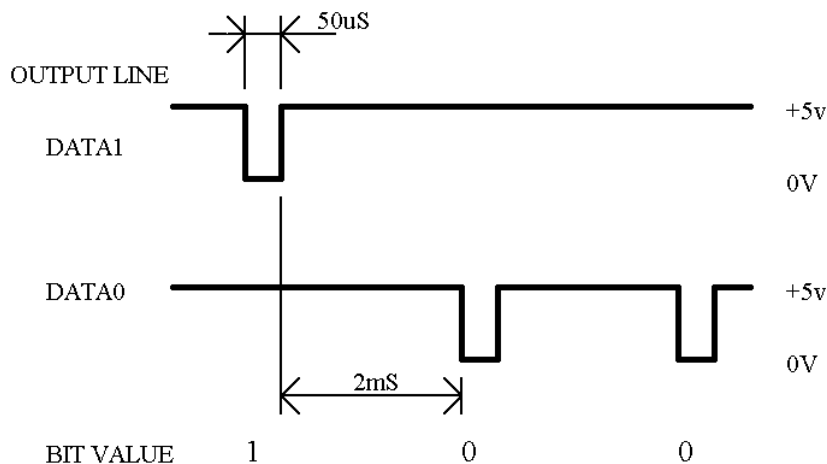


Connector Pin Description:



Wiegand input format description:

Wiegand protocol provides 2 lines for data transfer. A pulsed transition on the DATA1 line indicates a logic 1 bit, while a pulsed transition on the DATA0 line indicates a logic 0 bit. In their idle state both lines are held high. During data transfer the appropriate logic line will pulse low for 50uS followed by a period of 2ms where both lines are held high. In this fashion each bit is transmitted in sequence until all bits are sent. The end of the transmission is signaled by both lines being held high for more than 50mS. The following figure shows an example of the timing sequence for Wiegand protocol.



Wiegand 26 input format description:

Wiegand 26 protocol is defined as a stream of 26 bits, consisting of 1 Even parity bit, 24 data bits, and 1 Odd parity bit.

Bit	0	1	2	3	4	5	6	7	8	9	10	11	12	13	14	15	16	17	18	19	20	21	22	23	24	25
Note	P	D	D	D	D	D	D	D	D	D	D	D	D	D	D	D	D	D	D	D	D	D	D	D	D	P
	P	E	E	E	E	E	E	E	E	E	E	E	E													
														O	O	O	O	O	O	O	O	O	O	O	O	P

Note:

E: Even 0: odd P: parity bit D: DATA

The WIE232-A will read a signal presented in Wiegand 26 format and after checking for parity and bit length will convert the data stream to a serial RS232 output on the corresponding output connector. As only 24 bits of the 26 bit stream is data the string is converted to 6 ASCII coded characters representing 24bits in hexadecimal coding.

The format for this is:

XXYYZZ<cr> where XX are the hexadecimal representation of bits 1-8
 YY are the hexadecimal representation of bits 9-16
 ZZ are the hexadecimal representation of bits 17-24
 <cr> is a carriage return character \$0D

Wiegand 37 input format description:

Wiegand 37 protocol is defined as a stream of 37 bits, consisting of 1 Even parity bit, 35 data bits, and 1 Odd parity bit.

Bit	0	1	2	3	4	5	6	7	8	9	10	11	12	13	14	15	16	17	18	19	20	21	22	23	24	25	26	27	28	29	30	31	32	33	34	35	36	
Note	P	D	D	D	D	D	D	D	D	D	D	D	D	D	D	D	D	D	D	D	D	D	D	D	D	D	D	D	D	D	D	D	D	D	D	D	D	P
	P	E	E	E	E	E	E	E	E	E	E	E	E	E	E	E	E	E	E																			
																				O	O	O	O	O	O	O	O	O	O	O	O	O	O	O	O	O	O	P

Note: E : Even O: odd P: Parity bit D: data

The WIE232-A will read a signal presented in Wiegand 37 format and after checking for parity and bit length will convert the data stream to a serial RS232 output on the corresponding output connector. As only 35 bits of the 37 bit stream is data the string is converted to 9 ASCII coded characters representing 35bits in hexadecimal coding.

The format for this is:

MKKXXYYZZ<crn> where M is the hexadecimal representation of bits 1-3
 KK are the hexadecimal representation of bits 4-11
 XX are the hexadecimal representation of bits 12-19
 YY are the hexadecimal representation of bits 20-27
 ZZ is the hexadecimal representation of bits 28-35
 <crn> is a carriage return character \$0D

Eg:

1AA005322<crn> represents the wiegand data of 1AA005322 arriving on port 2

The serial output stream is sent at 9600 Baud, 8 data bits, no parity, 1 stop bit.

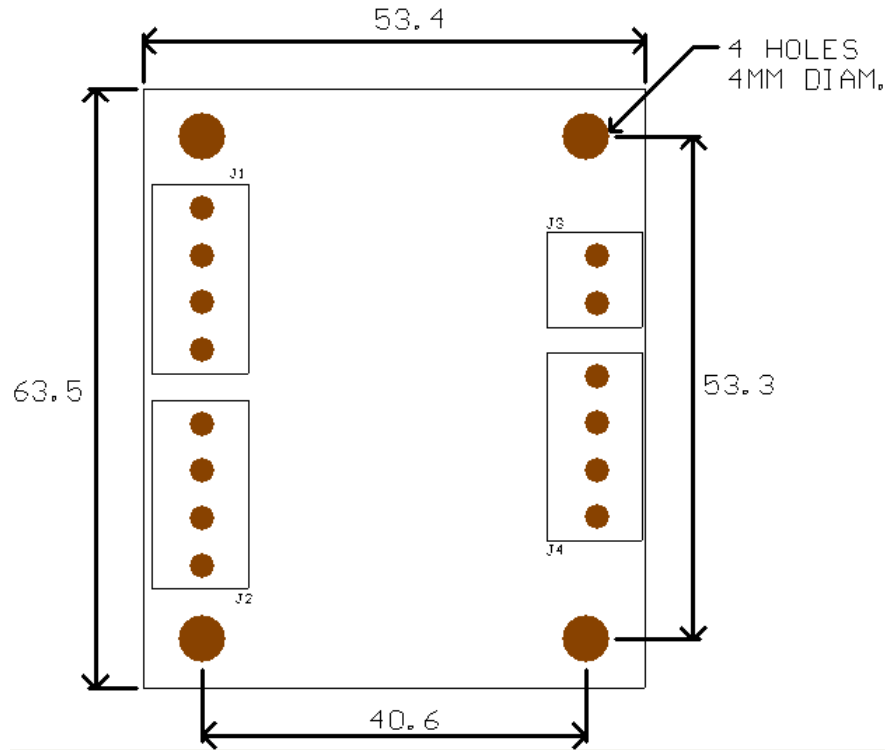
Protocol Selection.

The Protocol is selected via the option link pad LK1. Table 1 describes the available settings.

SW1	SW2	SW3	SW4	Protocol
Off	Off	Off	Off	Wiegand 26
On	Off	Off	Off	Wiegand 37
Off	On	Off	Off	-
On	On	Off	Off	-
Off	Off	On	Off	-
On	Off	On	Off	-
Off	On	On	Off	-
On	On	On	Off	-
Off	Off	Off	On	-
On	Off	Off	On	-
Off	On	Off	On	-
On	On	Off	On	-
Off	Off	On	On	-
On	Off	On	On	-
Off	On	On	On	-
On	On	On	On	-

Table 1. LK1 protocol select. ON = link placed

Dimensions:



All dimensions in mm.

Disclaimers.

Priority 1 Design reserves the right to change specifications and prices at any time and without notice. Priority 1 Design shall not be liable to recipients or any third party for any damages, including but not limited to personal injury, property damage, loss of profits, loss of use, interrupt of business or indirect, special incidental or consequential damages, of any kind, in connection with or arising out of the furnishing, performance or use of products supplied, or the technical data herein. No obligation or liability to recipient or any third party shall arise or flow out of Priority 1 Design rendering of technical or other services.

Life support — This product is not designed for use in life support appliances, devices, or systems where malfunction of these products can reasonably be expected to result in personal injury. Priority 1 Design customers using or selling this product for use in such applications do so at their own risk and agree to fully indemnify Priority 1 Design for any damages resulting from such application.