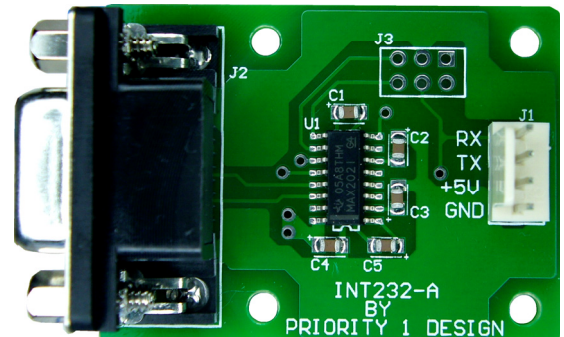


INT232-A

TTL TO RS232 CONVERTOR BOARD

Designed for embedding into products manufactured by third-parties, this unit is a simply low cost RS232 adapter board for converting TTL level logic to RS232 levels for communicating with PC's, dumb terminals or other standard devices utilizing a RS232 serial port.

- 1 transmit and 1 receive line, full duplex. RTS and CTS lines are also incorporated on board via solder pad area.
- This unit can be powered from 3.0V to 5.5V and meets EIA/TIA-232 and V.28/V.24 specifications, even at VCC = 3.0V.
- Small unit size: 48mm x 36mm
- On board DB9 female connector for direct connect to a serial port.
- 4 mounting holes
- Data rates up to 120kbps when loaded in accordance with the EIA/TIA-232E specification.



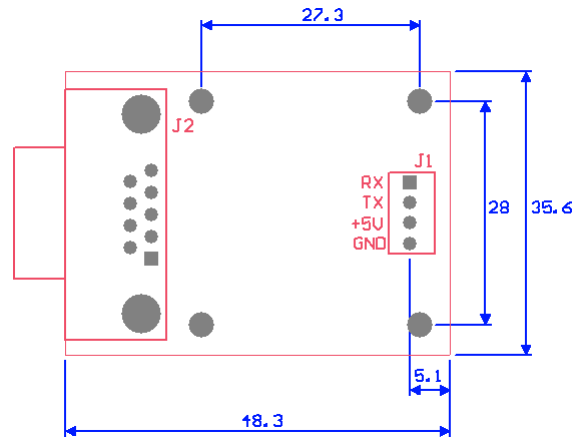
Connector Pin Description:

DB9 female (J2)	Description
2 (output)	RS232 Output
3 (input)	RS232 Input
5	GND Signal ground

4 way Con. (J1)	Description
1 (output)	RX TTL Output
2 (input)	TX TTL Input
3	+3.0 to +5.5V Supply
4	GND Signal ground

6 way solder pad(J3)	Description
1 +3.0 to +5.0V	+3.0 to +5.5V Supply
2 TX (Input)	Transmit Asynchronous Data
3 GND	GND Signal Ground
4 RX (Output)	Receiving Asynchronous Data
5 CTS (Input)	Clear To Send Control / Handshake Signal
6 RTS (Output)	Request to Send Control / Handshake Signal

Dimensions:



All dimensions in mm.

Disclaimers.

Priority 1 Design reserves the right to change specifications and prices at any time and without notice. Priority 1 Design shall not be liable to recipients or any third party for any damages, including but not limited to personal injury, property damage, loss of profits, loss of use, interrupt of business or indirect, special incidental or consequential damages, of any kind, in connection with or arising out of the furnishing, performance or use of products supplied, or the technical data herein. No obligation or liability to recipient or any third party shall arise or flow out of Priority 1 Design rendering of technical or other services.

Life support — This product is not designed for use in life support appliances, devices, or systems where malfunction of these products can reasonably be expected to result in personal injury. Priority 1 Design customers using or selling this product for use in such applications do so at their own risk and agree to fully indemnify Priority 1 Design for any damages resulting from such application.

